

Douglas Primary School & ELC

NEWSLETTER 5- Jan 2025

SCHOOL NEWS



Be Safe—Be Happy—Be All You Can Be!

Be Safe—Be Happy—Be All You Can Be!

AFTER SCHOOL CLUBS

Our after school clubs have continued to be very popular last term with children from P1-7 engaging in a range of new skills and experiences.

We have an updated list of clubs for this term as noted below:

Monday
Mindfulness Monday Club P1-7 (lunchtime)
Lego Club P1-4
Football P1-4
Craft Club P5-7

Tuesday
Book Club P1-7 (Lunch time)
Football P5-7

Wednesday
Cross Country Running P5-7 (Lunchtime)
Netball P5-7
Minecraft Club P1-4

Thursday
Dance P5-7 (Lunchtime)
Multi sports P1-4

Friday
Drama Club P1-7

If your child would like to attend any of the clubs please complete the request form below by Thursday 16th January so that spaces can be allocated.

[Club Form](#)

Please note that P5-7 Football and Netball children who are already signed up do not need to sign up again for this session.

Our P6/7 pupils will also be running some additional playtime and lunchtime clubs. Your child will be asked to sign up for these in school.

BREAKFAST CLUB

A little reminder that our School Breakfast Club runs every morning from 8.15 until 8.45am. All school children are welcome to attend and can have toast, cereal and water.

PARENTAL ENGAGEMENT

In an effort to continue our Parental Engagement we have organised for each class to have a classroom assembly or visit this term for parents/carers to attend.

We hope that these assemblies and visits will give you a greater insight into the learning and teaching that takes place in your child's classroom. It will also give your child the opportunity to showcase their learning.

Please see the dates below for the classroom assemblies/visits:

P1/2 Friday 21st March 9.30am

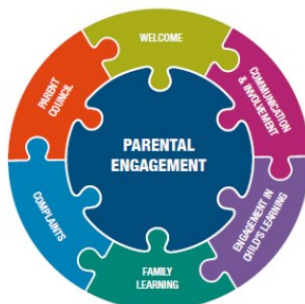
P2/3 Friday 14th March 9.30am

P3/4 Friday 28th March 9.30am

P5/6 Friday 28th Feb 9.30am

P6/7 Wednesday 12th Feb 1.30pm (Class Visit)

If you are unable to make your child's classroom assembly or visit then please feel free to send a member of your family or a friend.



BURN'S DAY CELEBRATIONS

We will be holding our annual school Burn's Celebration on Friday 31st January.

You are welcome to join us for the celebration in the hall at 1.30pm on the Friday.

The celebration will consist of 3 finalist from each class reciting their Scot's poem to a panel of judges (*finalists will be chosen next week and parent/carers will be informed*). There will also be some traditional Scot's songs being performed by the classes.

Please note that space will be limited as all children from the school will be seated within the hall too.

PARENT COUNCIL VALENTINES DISCO

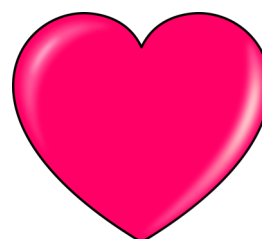
The Parent Council will be hosting a Valentine's Disco on Thursday 13th February in the evening.

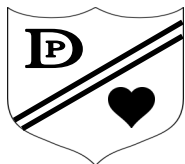
P1-3
6pm - 7pm

P4-7
7.15pm - 8.30pm

Tickets are priced at £2 and will go on sale next week. If your child wishes to attend they can purchase a ticket from the school office.

There will be a tuck shop available on the night.





Douglas Primary School & ELC

NEWSLETTER 5



NURSERY ENROLMENT

We are now taking applications for our ELC Class for session 2025/2026

If you have a child who will turn 2 – 5 years between 1st March 2025 and the end of February 2026 you can register them now for a place at Douglas Primary ELC/Nursery.

Please note that free 2 year old places are linked to a set criteria, if you do not qualify for free provision then you will be required to pay for your child's sessions should they be allocated a space.

We would ask you to contact the school office either by email – gw14douglasspsoffice@glow.sch.uk or by telephone **01555 851224** to arrange a suitable date and time for you to come in to complete the application on the week commencing 3rd February 2025.

You will need to bring your child's **FULL BIRTH CERTIFICATE** (abbreviated ones are no longer acceptable) as well as two pieces of recent official documentation both showing your permanent home address to clarify proof of residency when you come to complete the application form.

Examples of acceptable documents for proof of residency are listed below:

**Utility Bill
Council Tax Statement
Housing Rent Card
Child Benefit Document**

PLEASE NOTE THE DEADLINE FOR COMPLETED APPLICATIONS TO BE ON OUR SYSTEM IS MONDAY 24th FEBRUARY 2025

ATTENDANCE CONCERNS

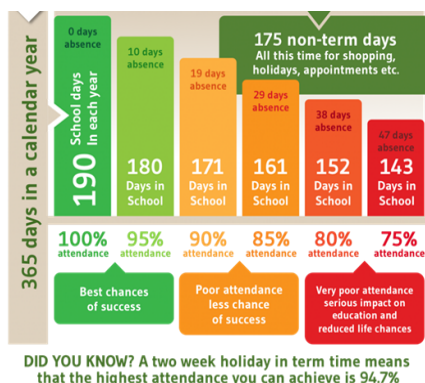
As mentioned in previous newsletters we are continuing to see a significant increase in the number of children who's attendance rates are a cause for concern. We understand that illness can not be avoided however for some children a pattern of absence is becoming apparent that is not sickness related.

If your child is absent from school then can we please remind you that you should be calling the school office to report each absence.

If there is any social and emotional reasons as to why your child may not want to attend school then please contact Mrs Hughes or your child's teacher so that we can work together to support your child needs.

Appointments (other than the doctors) and trips/treats should be planned outwith school time. We understand that there is not a dentist within the village but if possible could appointments be planned so that children can miss a small part of the day rather than a full day for a dentist visit.

We really hope to be able to work in partnership with you in order to be able to promote high attendance rates so that no child is being disadvantaged in relation to being able to access an education.



DATES FOR THE DIARY

Please find a link below to a calendar for all the term 2 holidays and events that we have planned so far. There will be additional dates such as trips that will be added as the term progresses.

[Calendar Link](#)

We aim to send out a calendar at the start of each term in order to give you as much notice as possible of events that will be taking place.

A paper copy will also be issued so that you have it to reference easily at home. Please take a moment to highlight the dates that are relevant to you and your child's class.

All dates for this session will also be added to the school app. Please ensure that you have the app downloaded and notifications on so that you will receive updates.

WELLBEING INDICATOR

Our Wellbeing Indicator of the Month for January is:
ACTIVE



GROWTH MINDSET MOTO

Feedback is a Gift, Accept it!

