



Douglas Primary School & ELC

NEWSLETTER 5- Jan 2024

SCHOOL NEWS



Be Safe—Be Happy—Be All You Can Be!

Be Safe—Be Happy—Be All You Can Be!

AFTER SCHOOL CLUBS

Our after school clubs have continued to be very popular last term with children from P1-7 engaging in a range of new skills and experiences.

We have an updated list of clubs for this term as noted below:

Monday
Homework Club P3-7
Minecraft Club P1-2

Tuesday
Book Club P1-7 (Lunch time)
Football P5-7
Lego Club P1-2
Sewing Club P5-7

Wednesday
Football P3-4 (MFC Coaches)
Multisport P1-2 (Active Schools)
Outdoor Learning Club P3-4

Thursday
Netball P5-7

If your child would like to attend any of the clubs please complete the request form below by Thursday 25th January so that spaces can be allocated.

Please note that P5-7 Football and Netball children who are already signed up do not need to sign up again for this session.

[Club Request Form](#)

BREAKFAST CLUB

A little reminder that our School Breakfast Club runs every morning from 8.15 until 8.45am.

All school children are welcome to attend and can have toast, cereal and water.

The club is free and run by a small group of parental volunteers.



ATTENDANCE CONCERNS

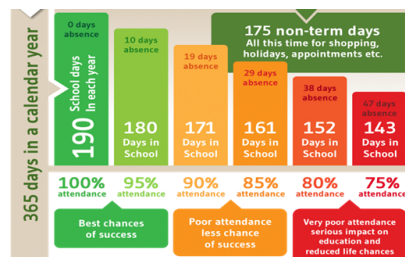
As mentioned in previous newsletters we are continuing to see a significant increase in the number of children who's attendance rates are a cause for concern. We understand that illness can not be avoided however for some children a pattern of absence is becoming apparent that is not sickness related.

If your child is absent from school then can we please remind you that you should be calling the school office to report each absence.

If there is any social and emotional reasons as to why your child may not want to attend school then please contact Mrs Hughes or your child's teacher so that we can work together to support your child needs.

Appointments (other than the doctors) and trips/treats should be planned outwith school time. We understand that there is not a dentist within the village but if possible could appointments be planned so that children can miss a small part of the day rather than a full day for a dentist visit.

We really hope to be able to work in partnership with you in order to be able to promote high attendance rates so that no child is being disadvantaged in relation to being able to access an education.



DID YOU KNOW? A two week holiday in term time means that the highest attendance you can achieve is 94.7%

BURN'S DAY CELEBRATIONS

We will be holding our annual school Burn's Celebration on Friday 26th January.

This is usually an in house event, however we know that a number of parent/carers had expressed an interest in attending. Therefore, we would like to invite you along to join in the celebration in the hall at 1.30pm on Friday.

The celebration will consist of 3 finalist from each class reciting their Scot's poem to a panel of judges (*finalists will be chosen today and parent/carers will be informed*). There will also be some traditional Scot's songs being performed by the classes.

Please note that space will be limited as all children from the school will be seated within the hall too.

PARENT COUNCIL—VALENTINES DISCO

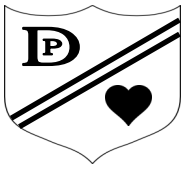
The Parent Council will be hosting a Valentine's Disco on Thursday 8th February in the evening.

P1-3
6pm - 7pm

P4-7
7.15pm - 8.30pm

Tickets are priced at £2 and will go on sale next week. If your child wishes to attend they can purchase a ticket from the school office.





Douglas Primary School & ELC NEWSLETTER 5



NURSERY ENROLMENT

We are now taking applications for our ELC Class for session 2024/2025.

If you have a child who will turn 2 – 5 years between 1st March 2024 and the end of February 2025 you can register them now for a place at Douglas Primary ELC/Nursery.

Please note that free 2 year old places are linked to a set criteria, if you do not qualify for free provision then you will be required to pay for your child's sessions should they be allocated a space.

We would ask you to contact the school office either by email – gw14douglaspsoffice@glow.sch.uk or by telephone **01555 851224** to arrange a suitable date and time for you to come in to complete the application on the week commencing 5th February 2024.

You will need to bring your child's **FULL BIRTH CERTIFICATE** (abbreviated ones are no longer acceptable) as well as two pieces of recent official documentation both showing your permanent home address to clarify proof of residency when you come to complete the application form.

Examples of acceptable documents for proof of residency are listed below:

- Utility Bill
- Council Tax Statement
- Housing Rent Card
- Child Benefit Document

PLEASE NOTE THE DEADLINE FOR COMPLETED APPLICATIONS TO BE ON OUR SYSTEM IS MONDAY 26th FEBRUARY 2024

INDOOR SHOES

Can we please ask that all pupils have a pair of indoor shoes that are kept in school for them to change into.

Having clean shoes within the school protects the flooring and the gym hall.

Indoor shoes do not need to be designer trainers a black plimsol is ideal for comfort.

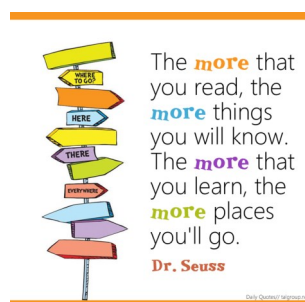
We do have a selection of shoes within our uniform bank if your child requires a pair please ask them to go to the school office to select ones that fit.

READY, STEADY, READ!

In February we plan to start a Ready, Steady, Read! Challenge for all the children within the school. We hope the challenge will promote a desire to read for enjoyment and to read as a whole family.

We will be holding family reading sessions on a Friday afternoon from after the February weekend holiday until we finish up at Easter. There is no expectation you to attend on a weekly basis but we hope that you may be able to participate in at least one session in order to support our challenge of reading for enjoyment as a family.

Further details of exact timings and plans for the session will be shared within the February newsletter.



DATES FOR THE DIARY

Please find a link below to a calendar for all the term 2 holidays and events that we have planned so far. There will be additional dates such as trips that will be added as the term progresses.

[Calendar Link](#)

We aim to send out a calendar at the start of each term in order to give you as much notice as possible of events that will be taking place.

A paper copy will also be issued so that you have it to reference easily at home. Please take a moment to highlight the dates that are relevant to you and your child's class.

Please note that in line with new reporting procedures we have changed the Parent Consultations to the end of this term and a final term written report will be issued in June.

WELLBEING INDICATOR

Our Wellbeing Indicator of the Month for January is:
ACTIVE



GROWTH MINDSET MOTO

Feedback is a Gift, Accept it!

